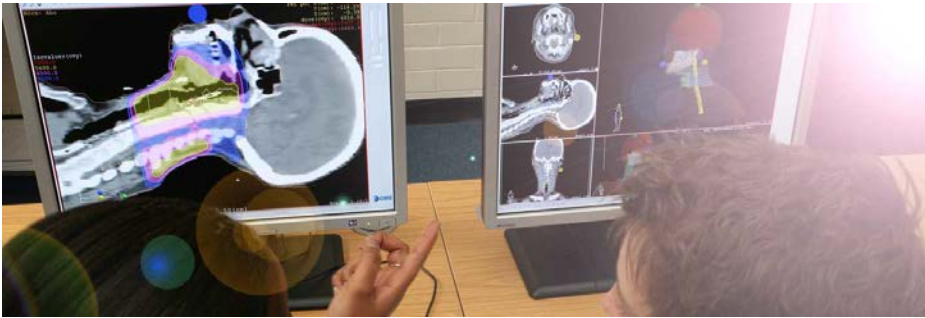


Cancer at Health and Applied Science

The Management of Head and Neck Cancer



UWE Bristol invites you to take part in this advanced and challenging module on the management of head and neck cancer.

This multi-professional MSc level course comprises of masterclasses in the care and management of people with head and neck cancer. It is suitable for all health professionals working within head and neck cancer and is particularly appropriate if you wish to consolidate or extend your clinical roles.

A variety of approaches will be used which may include:

- Technology enhanced learning
- Workshops and Masterclasses
- Lectures and Seminars
- Enquiry based learning
- Case based learning

The module will run from May to July 2017 and is provided as six taught days of learning. It is facilitated and taught by a range of healthcare professionals who are experts in their field. The taught days are supplemented by a wide range of online materials.

The six days comprise a 20 Credit module UZWSGV-20-M at Master's level.

<http://courses.uwe.ac.uk/UZWSGV20M/the-management-of-head-and-neck-cancer>

Date

Full [timetable information](#) can be found on our website

Location

UWE Bristol
Glenside Campus

Funding

Funding may be available to support your learning. Please contact your employer who will advise you.

Contact

Tel: +44 (0)117 32 81158
Email: has.cpd@uwe.ac.uk

Twitter: @UWEhasCPD
#UWEcourses